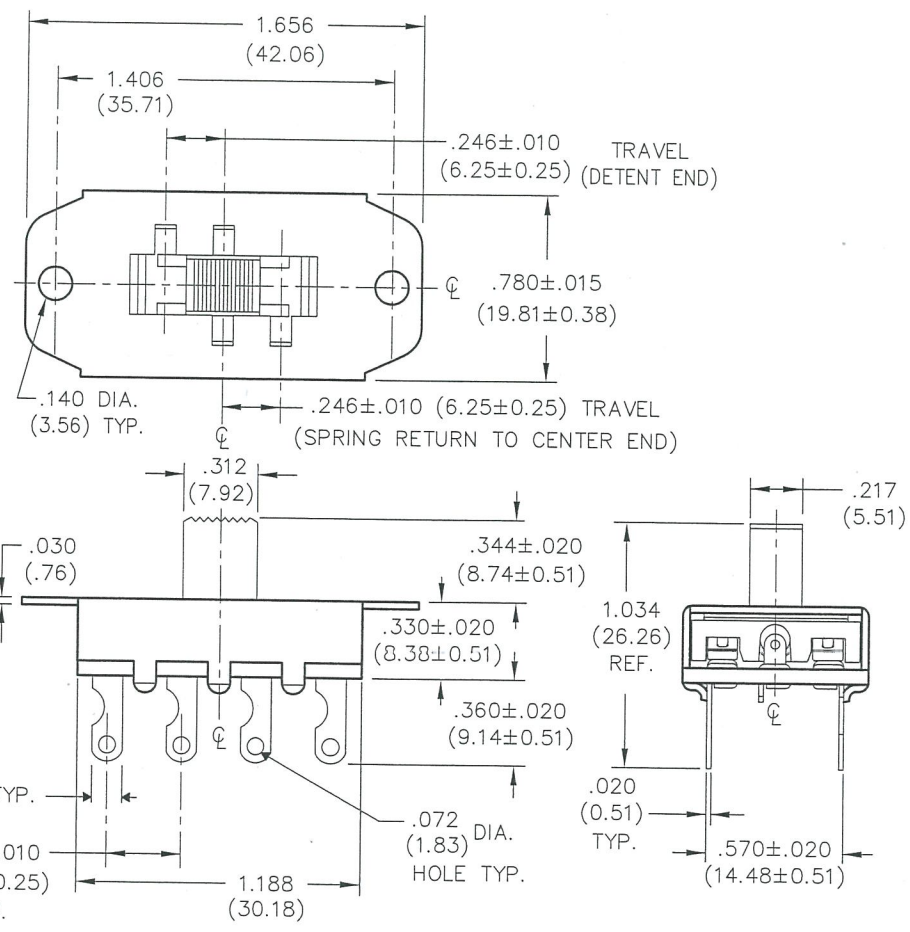


E  
 D  
 C  
 B  
 A

THIS INFORMATION IS CONFIDENTIAL AND PROPRIETARY TO CW INDUSTRIES, INCORPORATED, AND ITS AFFILIATES. IT MAY NOT BE DISCLOSED TO ANYONE, OTHER THAN CW INDUSTRIES PERSONNEL, WITHOUT WRITTEN AUTHORIZATION FROM CW INDUSTRIES INCORPORATED, SOUTHAMPTON, PENNSYLVANIA, USA.

DIMENSIONS IN INCHES (MILLIMETERS)  
 DO NOT SCALE DRAWING .....

Dwg. No.  
**G-635S-0000**



1	2	3	4	5	6	7	8	9	10
---	---	---	---	---	---	---	---	---	----

B-FORMAT 2002  
**REVISIONS**  
 RELEASED: 4-12-16  
 DGW

**CW INDUSTRIES**  
 Southampton, Pa. 18966

**TOLERANCES UNLESS OTHERWISE SPECIFIED**  
 2 Place Decimal ±.010 METRIC  
 3 Place Decimal ±.005 1 Place Dec. ±.25mm  
 Angles ..... ±1' 2 Place Dec. ±.13mm

Made for: CW IND.  
 Drawn by: DGW 4-12-16  
 Checked by: *G. GULD 4-18-16*  
 Approval: *G. GULD 4-18-16*

Title: **MOMENTARY SLIDE SWITCH**  
**D.P.- 3 POS.**  
 SPRING RETURN ONE END TO CENTER  
 DETENT TO OTHER END TO CENTER

Division: **SWITCH**  
 Dwg. No. **G-635S-0000**

MASTER